

A MONSTER IN LONDON

JACK THE RIPPERS

Team 8

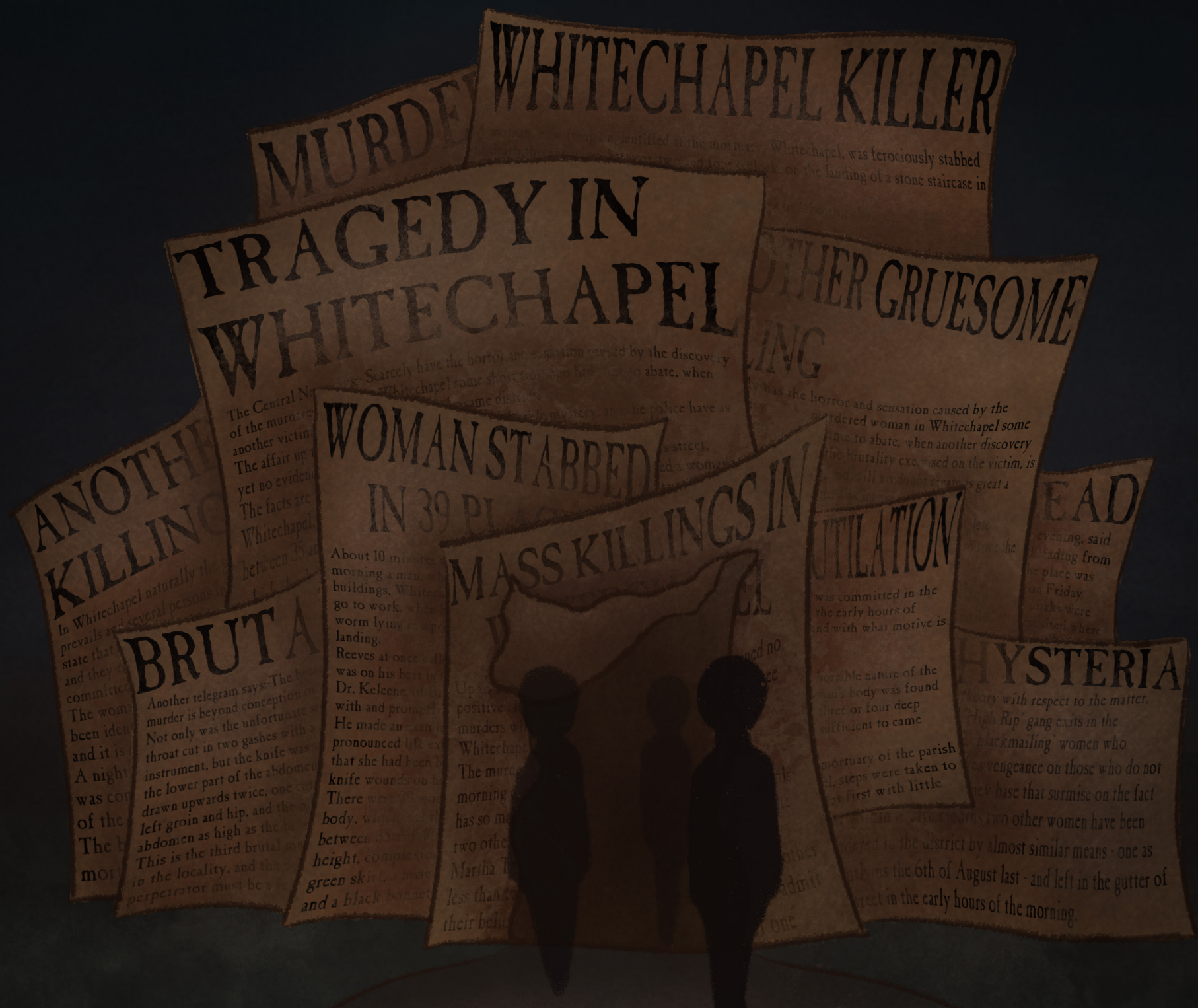
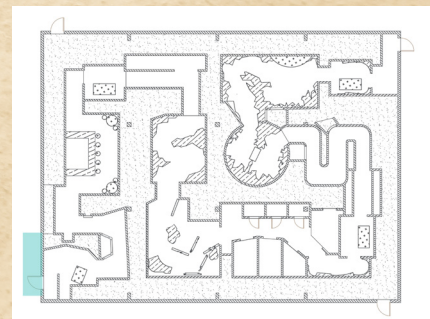
Prompt: Literature

DELIVERABLE: Visual
Development



Beat 1: Facade

You enter through a menagerie of newspapers headlining the recent killings and hysteria in Whitechapel, London. As you delve into the pages, they begin to elongate and form into the town of Whitechapel, London, where your journey begins.





HAUNT COMP

A HAUNTED HOUSE DESIGN COMPETITION

Team 8

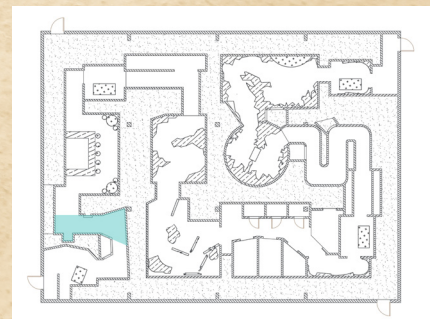
Prompt: Literature

DELIVERABLE: Visual
Development



Beat 2: Alleyway

You venture down a winding alley. Ahead, the shadow of a figure outlined in lamplight carves up a victim. As you creep closer, the shadow projection of a tall, humanoid figure stalks around the corner and disappears in a flash of blue light.



Team 8

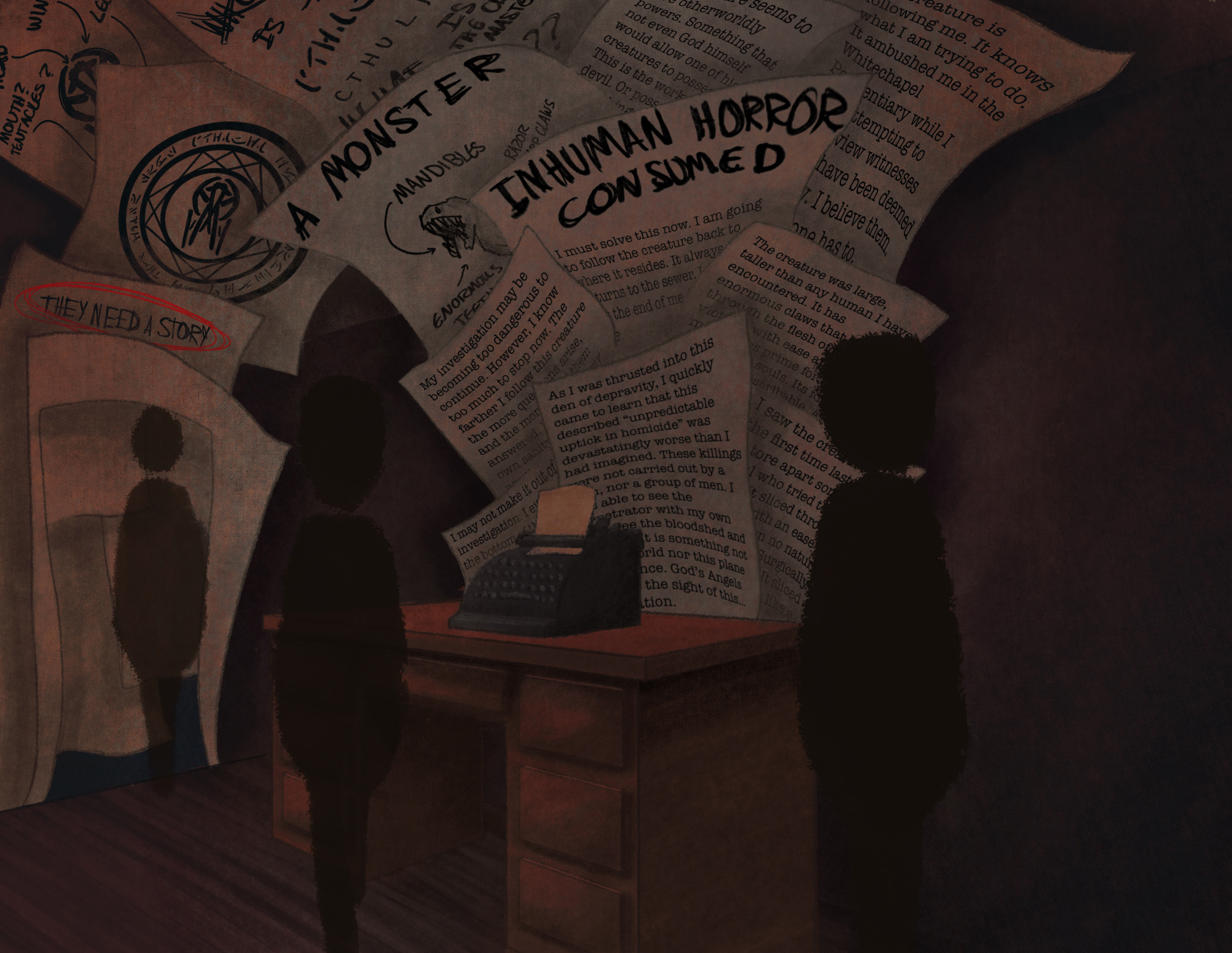
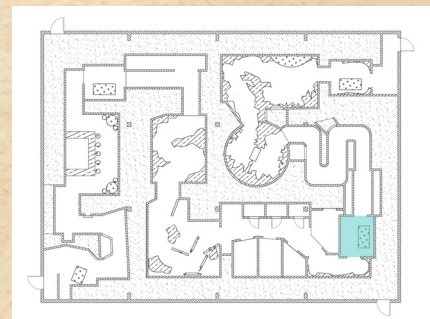
Prompt: Literature

DELIVERABLE: Visual
Development



Beat 9: Writers Room

You enter your writers room. The flyers of wanted posters morph into your manuscript. The room has dissolved into chaos, the pages seemingly pouring out of the typewriter flooding onto the walls and ceiling.





Team 8

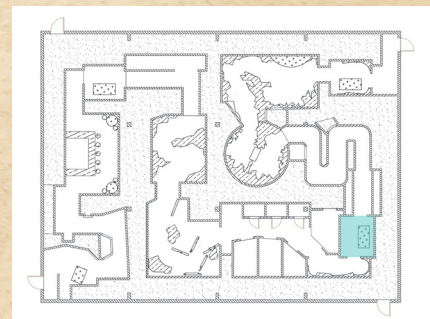
Prompt: Literature

DELIVERABLE: Visual
Development



Beat 9: Writers Room

A crack of lighting, dozens of runes appear on the walls of your personal room, all glowing with an ethereal blue light.



Team 8

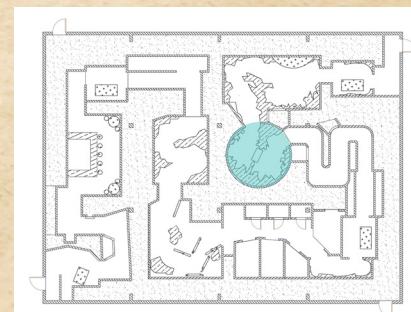
Prompt: Literature

DELIVERABLE: Visual
Development



Beat II: Sewer

The caverns of the sewer open into a large expanse, at its center, a large blue portal etched with the same runes covering your writers room. piles of victims lie before the portal. You enter the portal.



Team 8

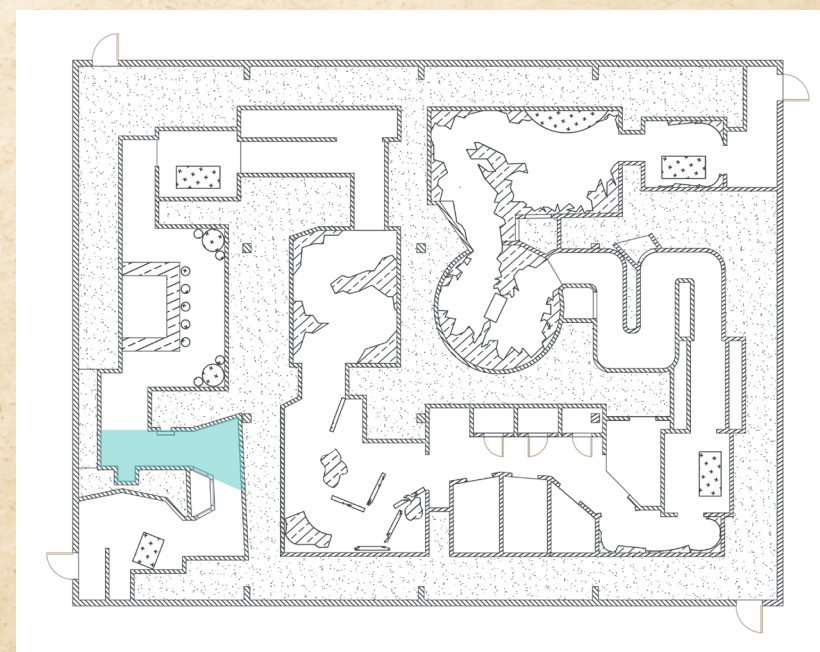
Prompt: Literature

DELIVERABLE: Visual Development



Beat 2: The Watchman

You encounter the watchman as he roams through the city by light of his lantern, seeking answers on the murders.



Team 8

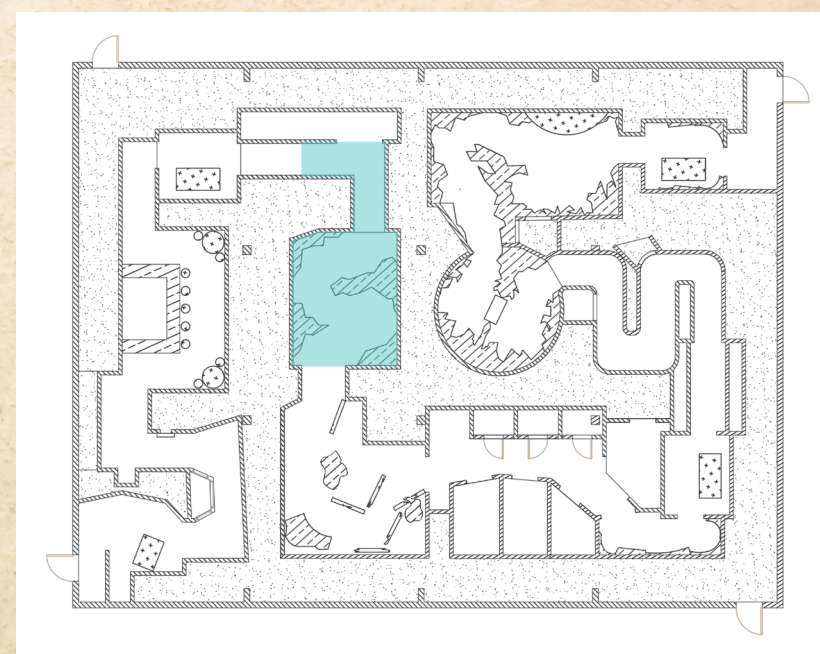
Prompt: Literature

DELIVERABLE: Visual Development



Beat 5 and 6: The Ragman

You encounter the watchman as he roams through the city by light of his lantern, seeking answers on the murders.



Team 8

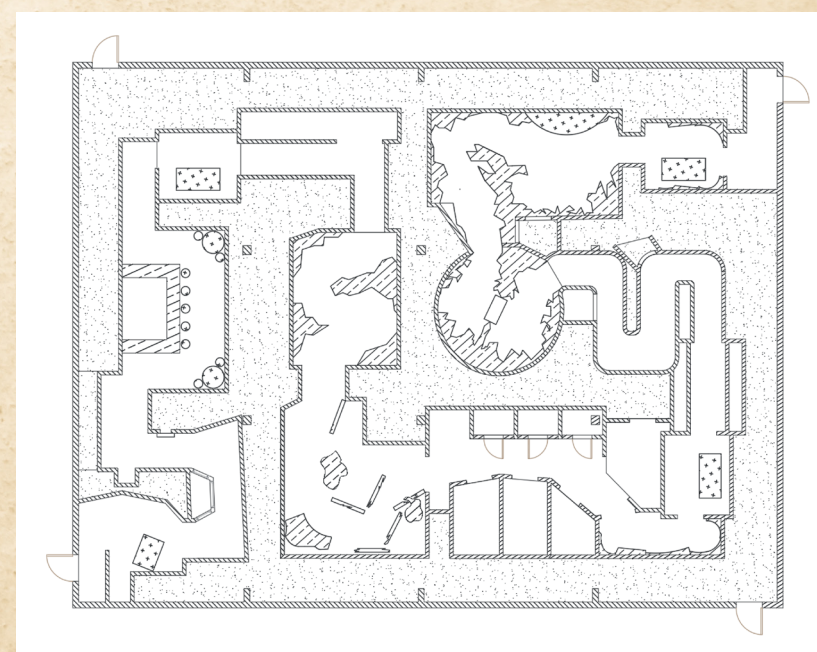
Prompt: Literature

DELIVERABLE: Visual Development



Multiple Beats: The Creature

As you pursue the killer through whitechapel, you begin to realize it is not human at all, but rather a ghoulish, grotesque creature. His skin corrupted and leaking a glue glow, his claws stained black with blood, and milky white eyes.



Team 8

Prompt: Literature

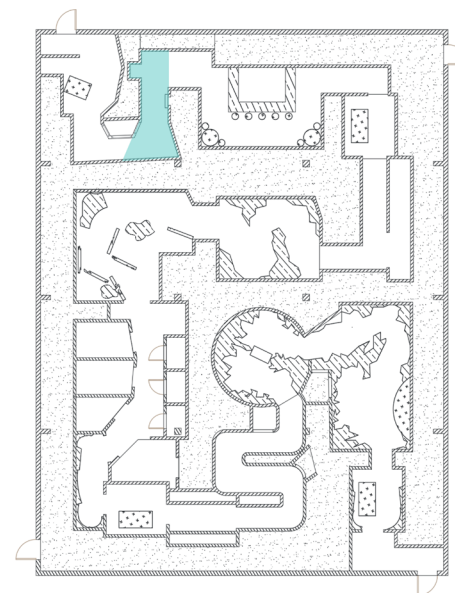
DELIVERABLE: Elevations



Beat 2: Alleyway Elevation

Scale:

1/4" = 1'0"



Team 8

Prompt: Literature

A HAUNTED HOUSE DESIGN COMPETITION

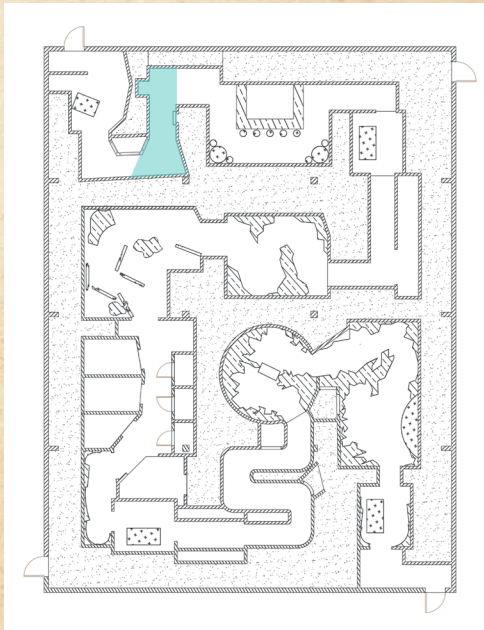
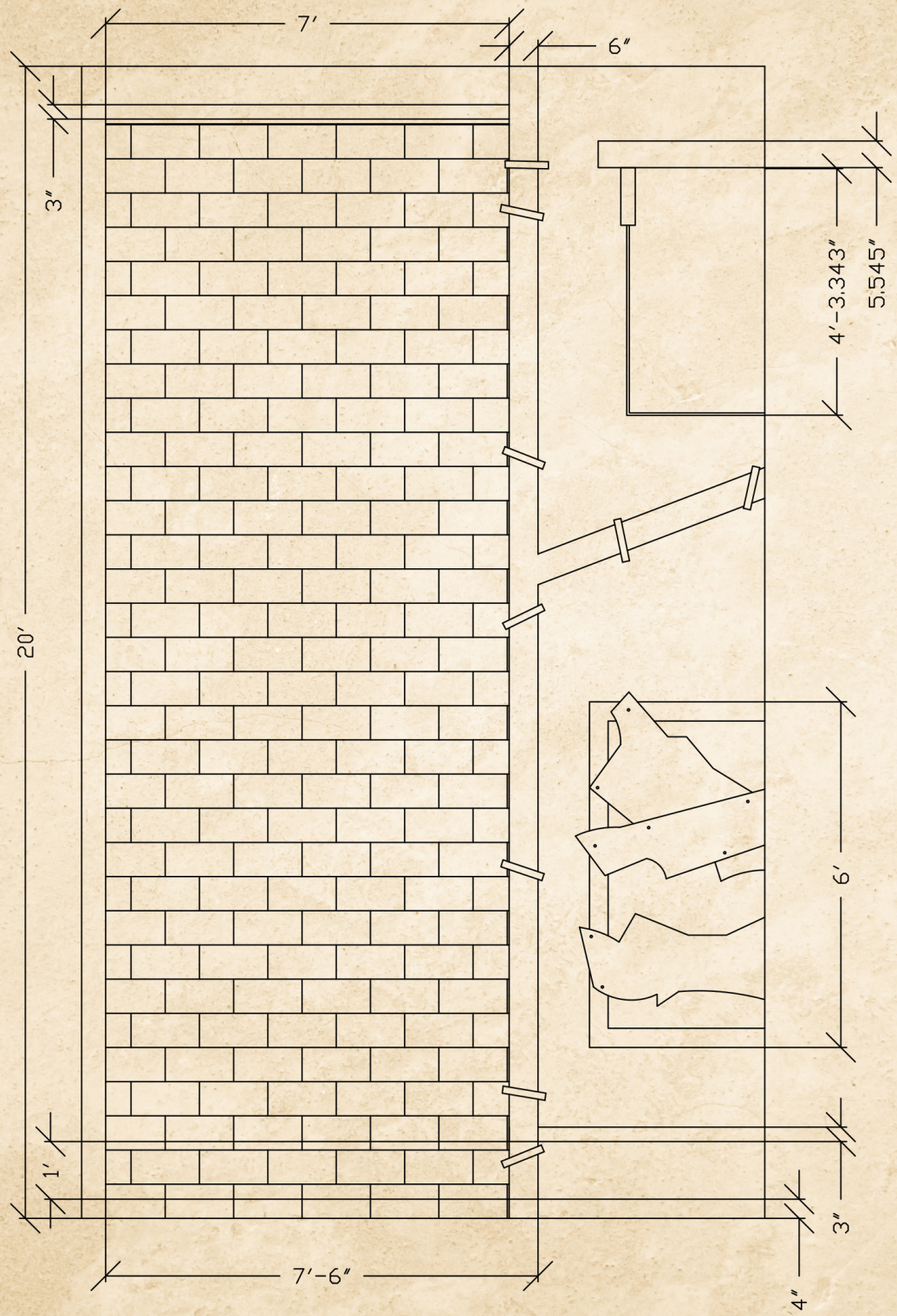
DELIVERABLE: Elevations



Beat 2: Alleyway Elevation

Scale:

1/4" = 1'0"



Team 8

Prompt: Literature

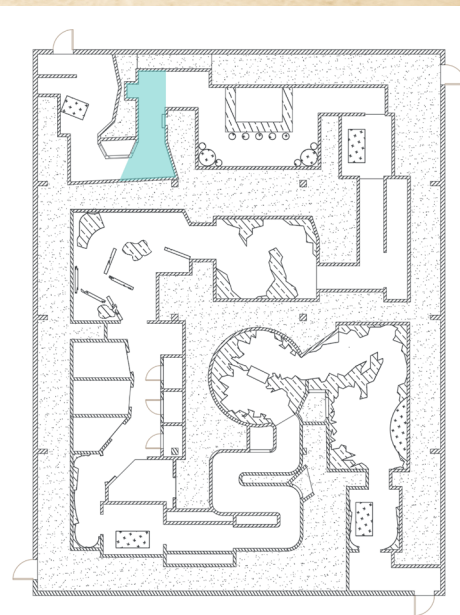
DELIVERABLE: Elevations



Beat 2: Alleyway Elevation

Scale:

1/4" = 1'0"



Team 8

Prompt: Literature

A HAUNTED HOUSE DESIGN COMPETITION

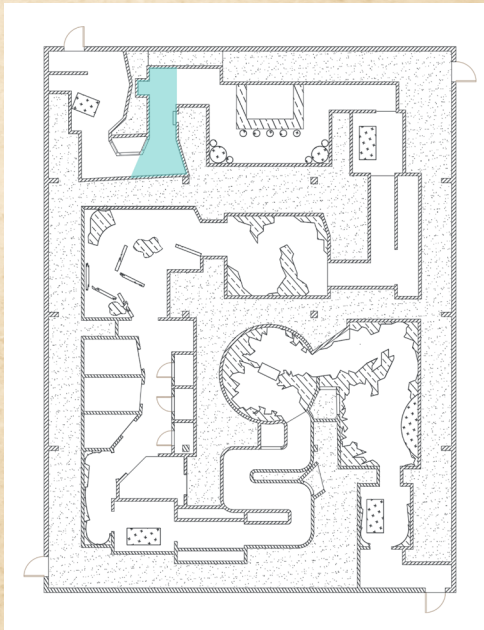
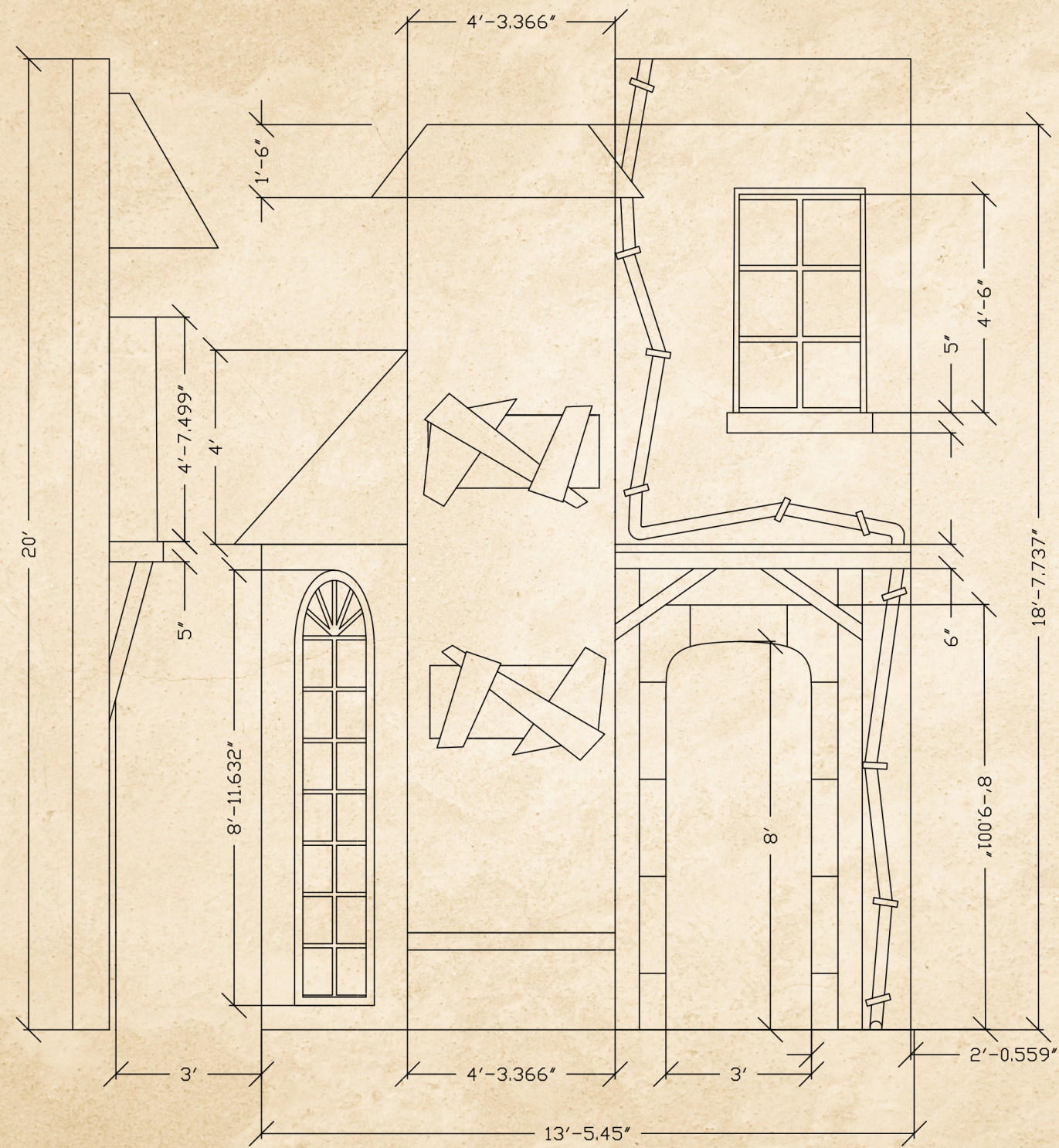
DELIVERABLE: Elevations



Beat 2: Alleyway Elevation

Scale:

1/4" = 1'0"



Team 8

Prompt: Literature

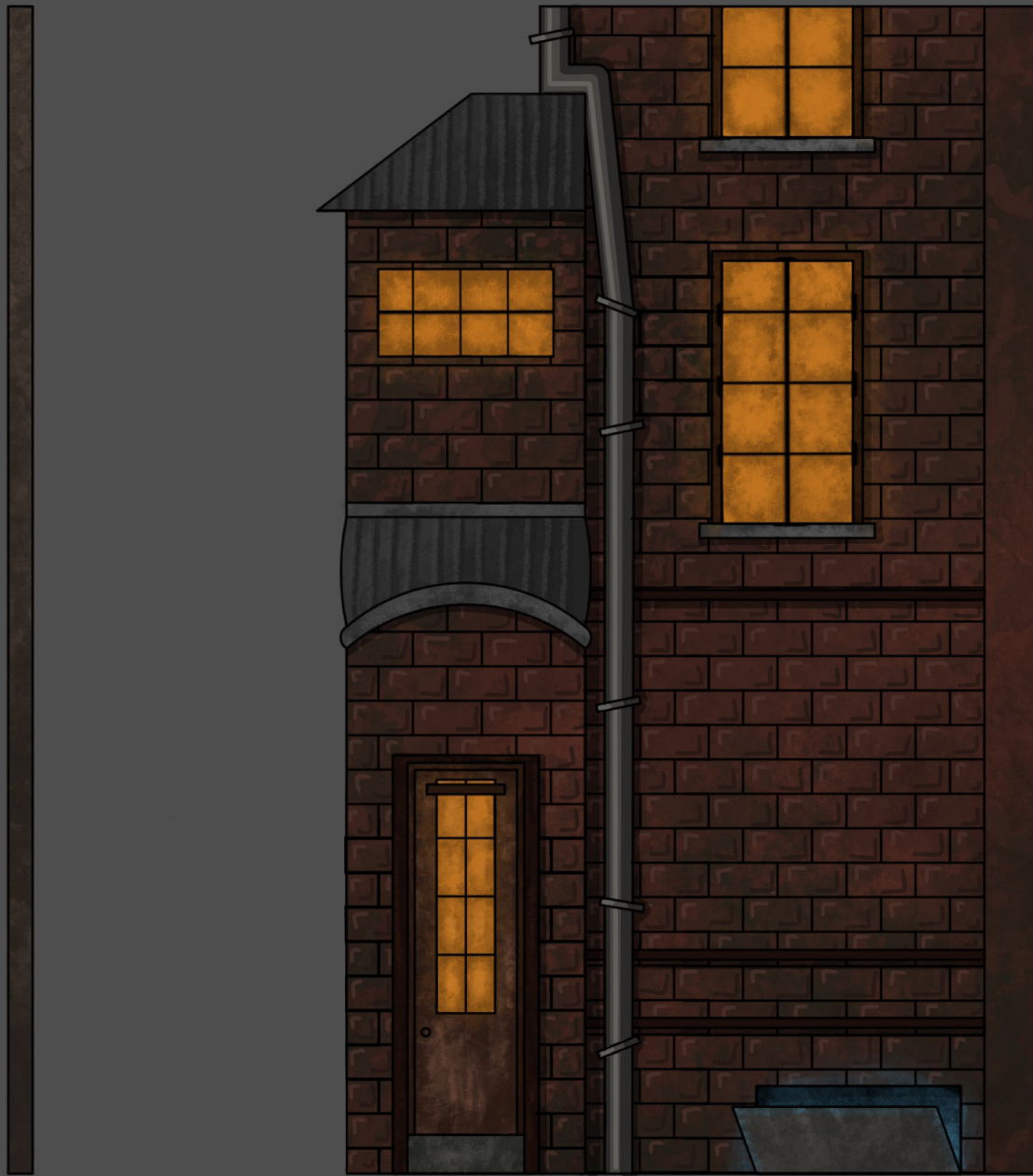
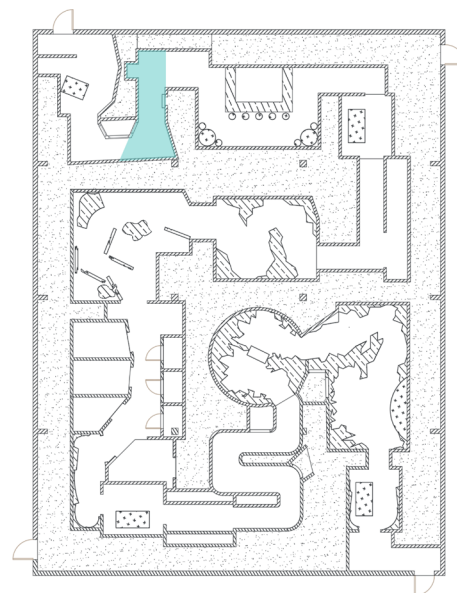
DELIVERABLE: Elevations



Beat 2: Alleyway Elevation

Scale:

1/4" = 1'0"



Team 8

Prompt: Literature

A HAUNTED HOUSE DESIGN COMPETITION

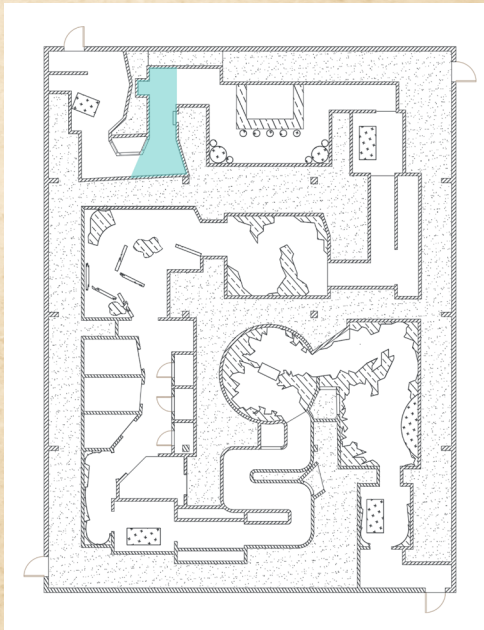
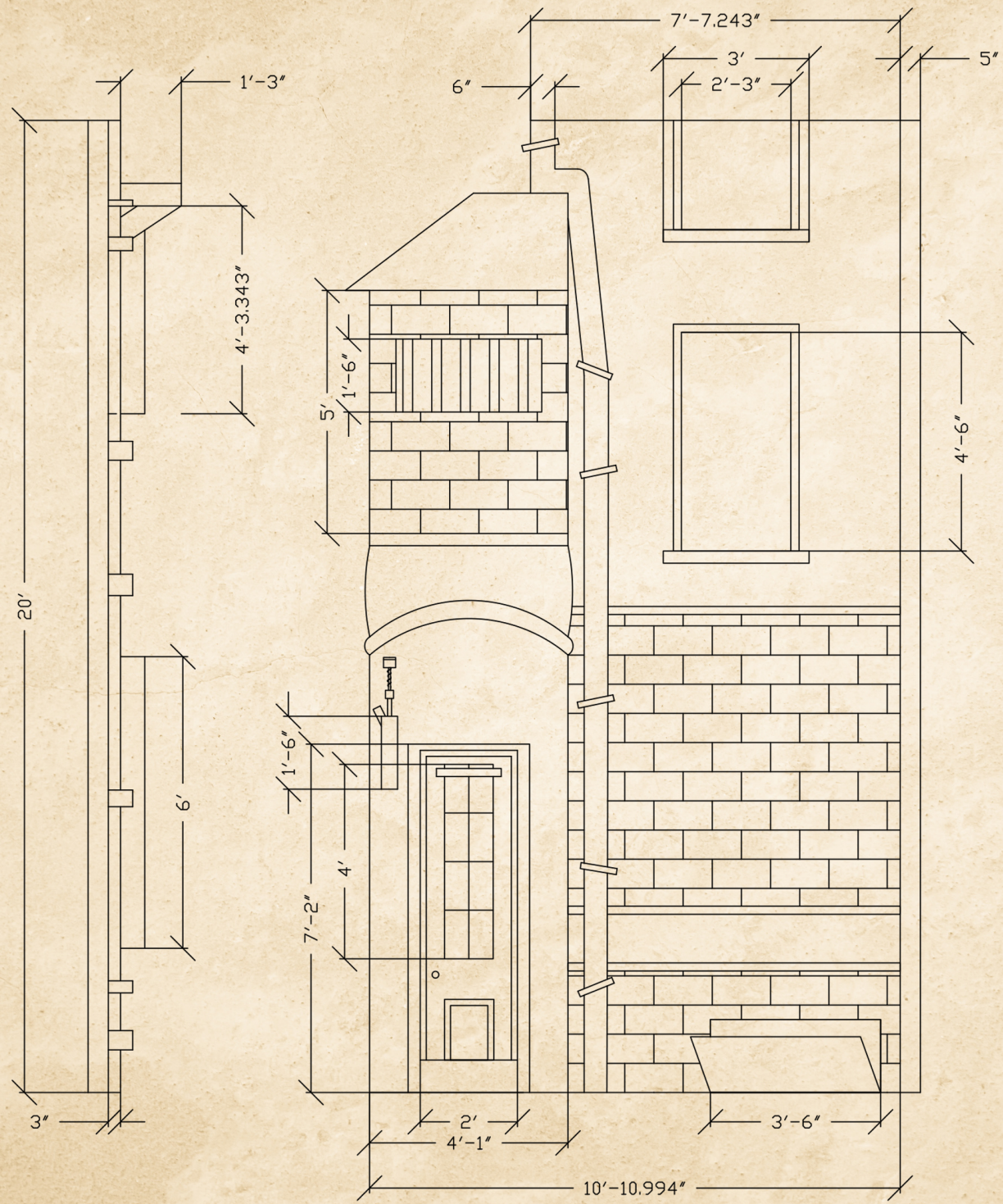
DELIVERABLE: Elevations



Beat 2: Alleyway Elevation

Scale:

1/4" = 1'0"



Team 8

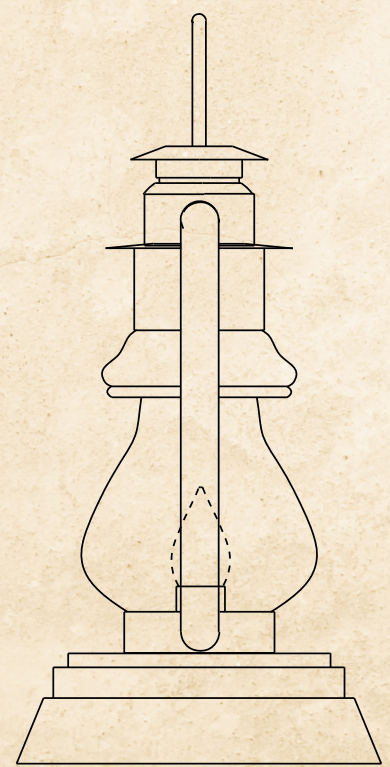
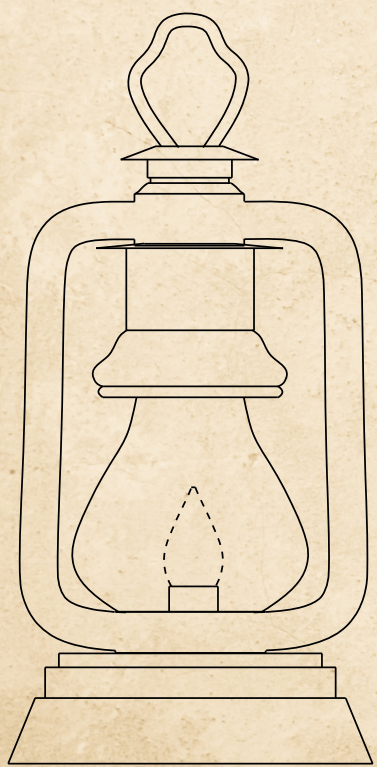
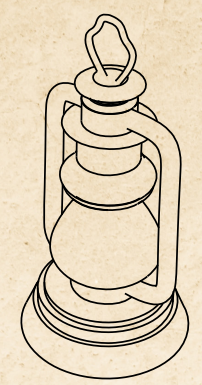
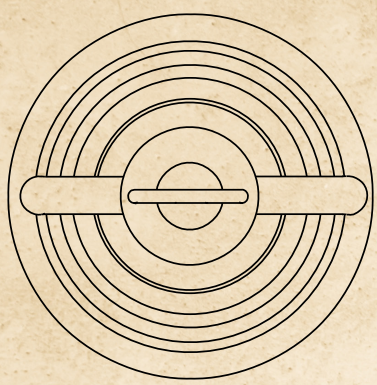
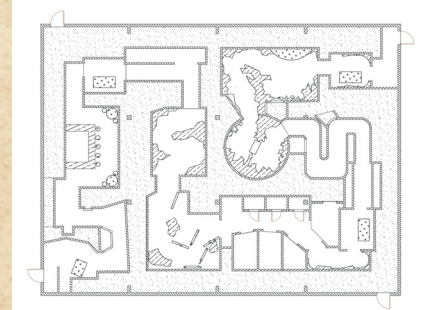
Prompt: Literature

DELIVERABLE: Visual
Development



Multiple Beats: Lantern

For guests who have purchased the upcharge experience, they will receive an interactive lantern to take with them into the house. Upon exiting the house, they will trade in their lantern to the house attendant and receive a mission brief sent by the London Times Editor.



Team 8

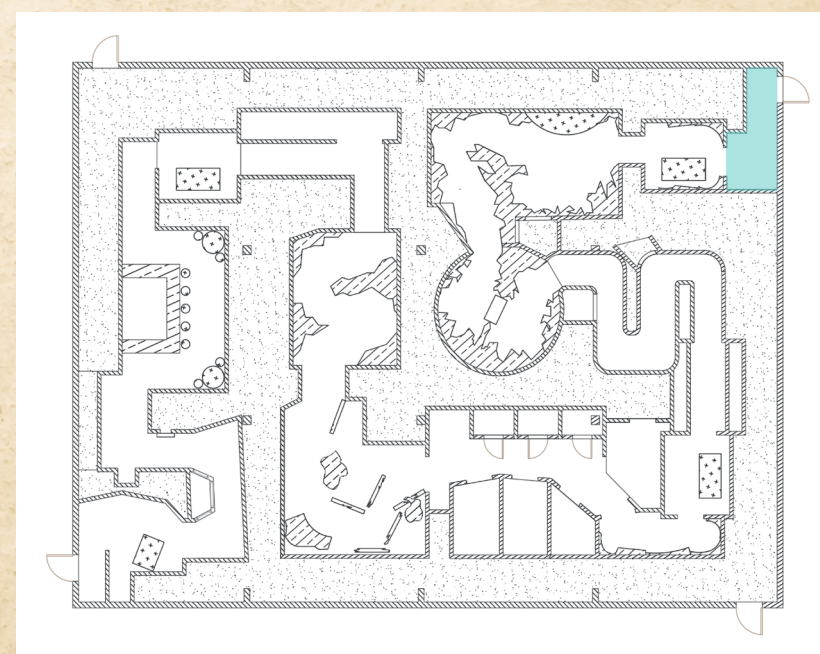
Prompt: Literature

DELIVERABLE: Visual Development



Beat 13: Mission Brief Folder

For guests who purchased the upcharge experience, after turning in their lantern, they will be handed a mission brief folder. The folder contains all you need to know for your assignment chasing this mystery killer. It includes the mission statement from your boss, a code to the strange runes appearing in the house, and the final newspaper you publish.



THE
LONDON
TIMES



Team 8

Prompt: Literature

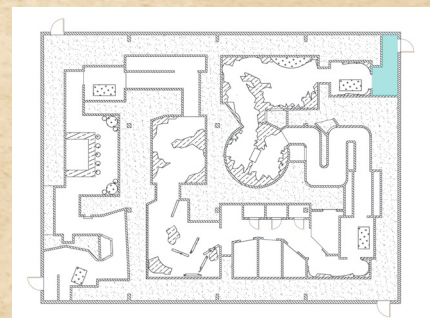
A HAUNTED HOUSE DESIGN COMPETITION

DELIVERABLE: Visual
Development



Beat 13: Cypher

For guests who have purchased the upcharge experience, after they return the lantern, they will receive a mission brief folder. The cypher is one of the items inside and it is a piece of notebook paper that you would have written that cracks the code on the strange, glowing blue ruins.



← arrows? →
CURVES

a	b	c	d	e	f	g
≡	∩	∩	∩	≡	≡	∩

What do they mean?

h	i	j	k	l	m	n	o
∩	∩	∩	∩	∩	∩	∩	∩

p	q	r	s	t	u	v
∩	∩	∩	∩	∩	∩	∩

w	x	y	z
∩	∩	∩	∩

Same pattern

8th OCTOBER 1888

To whom it may concern:

The following document and its contents are for the sole purpose of your viewing only. The security and sanctity of THE LONDON TIMES is of primary concern. By opening this document, you have agreed to refrain from disclosing the information below, under penalty of extreme corrective measures.

DO NOT SHARE.

THE LONDON TIMES firmly believes in the thorough research and dispersal of information regarding the happenings throughout London. In accordance with the LONDON METROPOLITAN POLICE DEPT. The district of Whitechapel has been under blockade. Nobody is allowed in or out. This is where you come in.

The reason for this letter is as follows: You have been summoned to London's EAST END to investigate and report on the recent disappearances within the district. What little evidence that has been recovered points to the culprit being a large, cloaked individual. It is unsure what information can be trusted, but one thing is for certain, the information you uncover will define the whole of London.

What the Metropolitan Police Department has failed to do; is crack the cipher sent by mail to our offices. The cipher, a 26 symbol code, is enclosed below. Your directive is to discover what you can about the disappearances in Whitechapel and collect evidence that will uncover the identity of the masked culprit.

You will arrive by night, via schooner-class sea vessel: infiltrate the blockade, and report back as with the rest of your findings.



A handwritten signature in black ink that reads "Richard Walker".

Richard Walker
Chief Editor,
The London Times

HAUNT COMP

A HAUNTED HOUSE DESIGN COMPETITION

Team 8

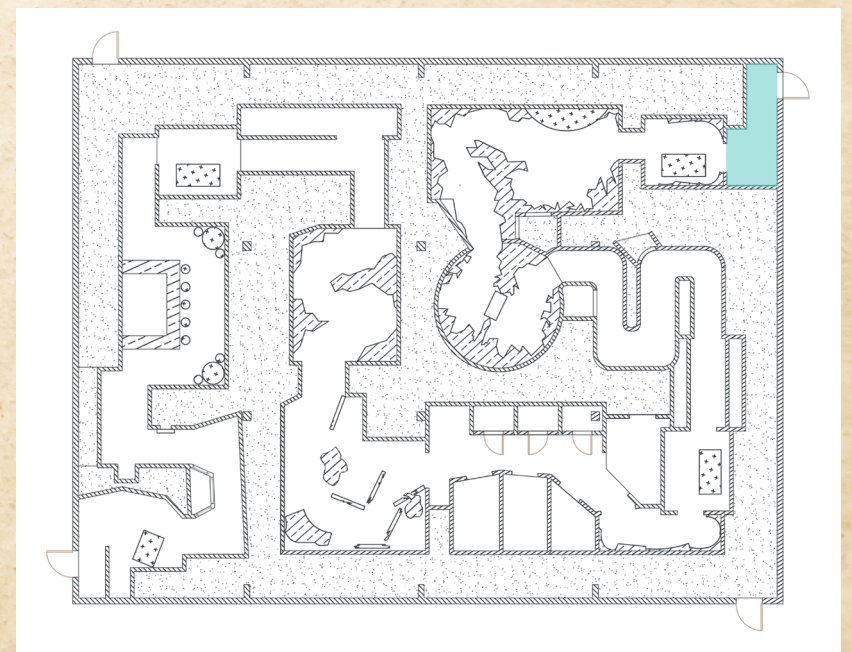
Prompt: Literature

DELIVERABLE: Visual Development



Beat 13: Mission Statement

For guests who have purchased the upcharge experience, after they return the lantern, they will receive a mission brief folder. The mission statement is one of those items and it is a letter from The London Times explaining that you must go find what is happening in London's East End.



CHOP N GRIND EXPRESS



Cornish Pasty: A flaky pastry shell filled with beef, potatoes, and onions, served warm.

\$8.49



A Detective's Bread and Butter: Three slices of soda bread served with an irish cream dipping sauce.

\$11.49



Waldorf Pudding: Chop n Grind's signature dessert is a bread pudding featuring apples and walnuts

\$6.49

HAUNT COMP

A HAUNTED HOUSE DESIGN COMPETITION

Team 8

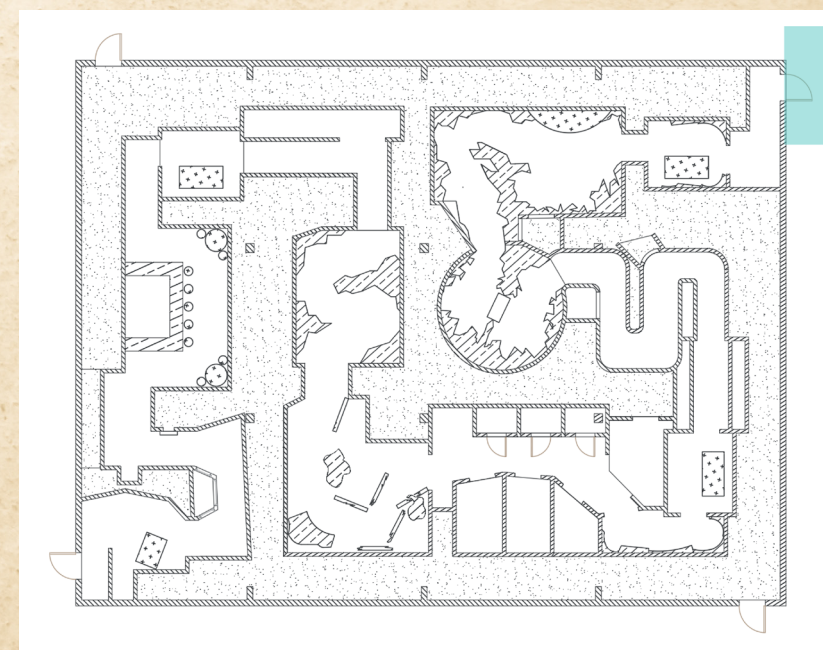
Prompt: Literature

DELIVERABLE: Visual Development



Location: Themed Food and Beverage Vending

In order to make an extra pound, the chop and grind has expanded business and is now offering a to go menu to citizens passing by. They're now offering their signature dishes and some crowd favorite cocktails.



CHOP N GRIND

EXPRESS



Editor's Mug: What's really in the boss's mug? This espresso has been spiked with vodka and irish cream

\$18.49



Lovecraft's Libation: Inspired by the words created by HP Lovecraft, this drink features blue curucao, mint, and lavender

\$14.49



Chop N Grind Special: The "chef" at the notorious Chop N Grind Pub has thrown whatever spare ingredients he had into this drink

\$16.49

HAUNT COMP

A HAUNTED HOUSE DESIGN COMPETITION

Team 8

Prompt: Literature

DELIVERABLE: Visual Development



Location: Themed Food and Beverage Vending

In order to make an extra pound, the chop and grind has expanded business and is now offering a to go menu to citizens passing by. They're now offering their signature dishes and some crowd favorite cocktails.

